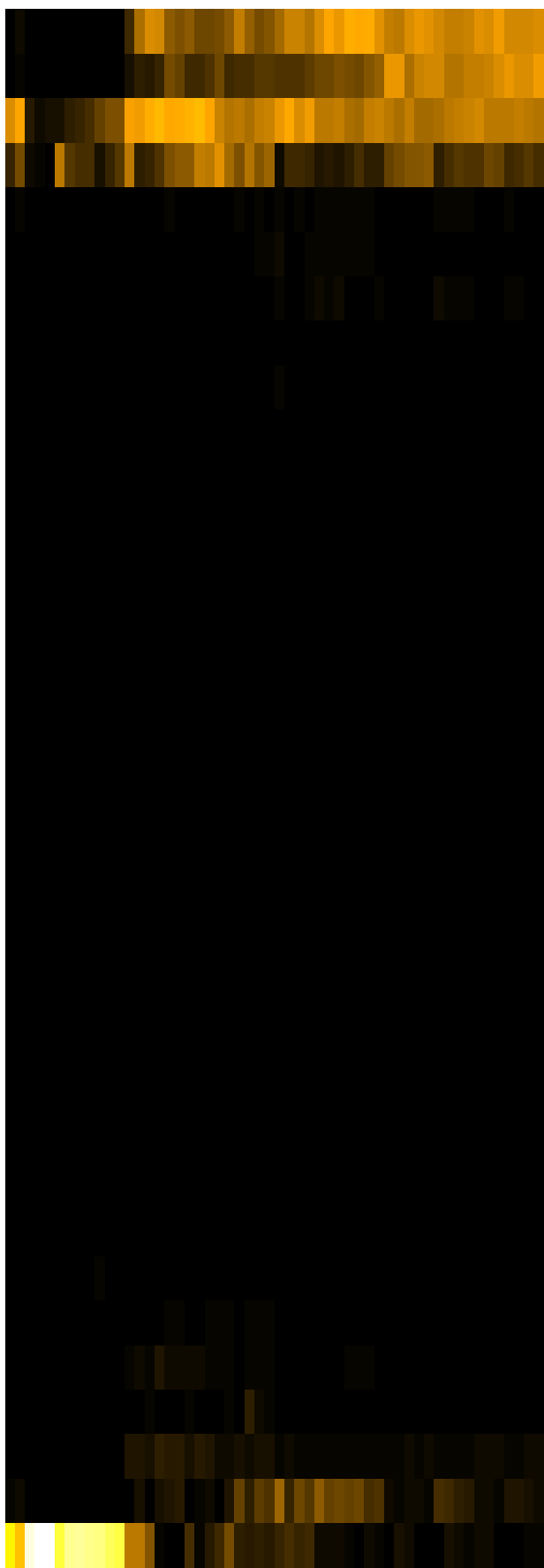
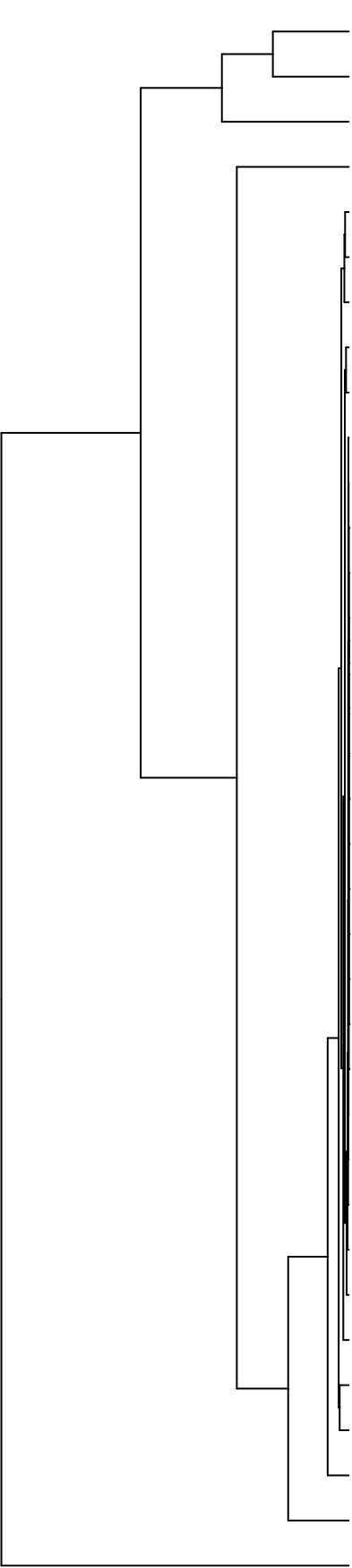


Group006  
 I Final -PMA  
 F Final -PMA



- Veillonellaceae
- Pasteurellaceae
- Streptococcaceae
- Neisseriaceae
- Campylobacteraceae
- Leptotrichiaceae
- Prevotellaceae
- Porphyromonadaceae
- Lachnospiraceae
- Saccharibacteria\_(TM7)\_[F-1]
- Atopobiaceae
- Propionibacteriaceae
- Flavobacteriaceae
- Yersiniaceae
- Moraxellaceae
- Sphingomonadaceae
- Microbacteriaceae
- Rhizobiaceae
- Phyllobacteriaceae
- Weeksellaceae
- Abconditabacteria\_(SR1)\_[F-1]
- Hymenobacteraceae
- Saccharibacteria\_(TM7)\_[F-2]
- Mycobacteriaceae
- Burkholderiaceae
- Comamonadaceae
- Erysipelotrichaceae
- Pseudomonadaceae
- Staphylococcaceae
- Gemellaceae
- Actinomycetaceae
- Micrococcaceae
- Carnobacteriaceae
- Fusobacteriaceae
- Enterobacteriaceae

- F28914.S607
- F28914.S464
- F28914.S459
- F28914.S462
- F28914.S458
- F28914.S608
- F28914.S297
- F28914.S301
- F28914.S144
- F28914.S303
- F28914.S141
- F28914.S139
- F28914.S137
- F28914.S138
- F28914.S433
- F28914.S436
- F28914.S438
- F28914.S596
- F28914.S595
- F28914.S118
- F28914.S280
- F28914.S279
- F28914.S115
- F28914.S113
- F28914.S274
- F28914.S120
- F28914.S278

Samples

Family